

### Supplementary Table and Figure

Table A.1 Characteristics of individual component of simulated food waste

Parameter	Carrot	Potato	Bread	Pet food
TS (%)	12.5±0.5	24.5±0.7	79.8±0.1	97.0±0.01
VS (%)	11.7±0.5	21.0±1.78	77.4±1.5	93.6±0.1
TS (g/kg)	125.4±5.0	245.1±6.9	798.3±1	970.5±0.1
VS (g/kg)	117.3 ±5.1	210.3±17.8	774.5±15.4	936.1±1.2
VS/TS (%)	94	86	97	96

### Leachate Percolation in LBRs with different GAC loading:

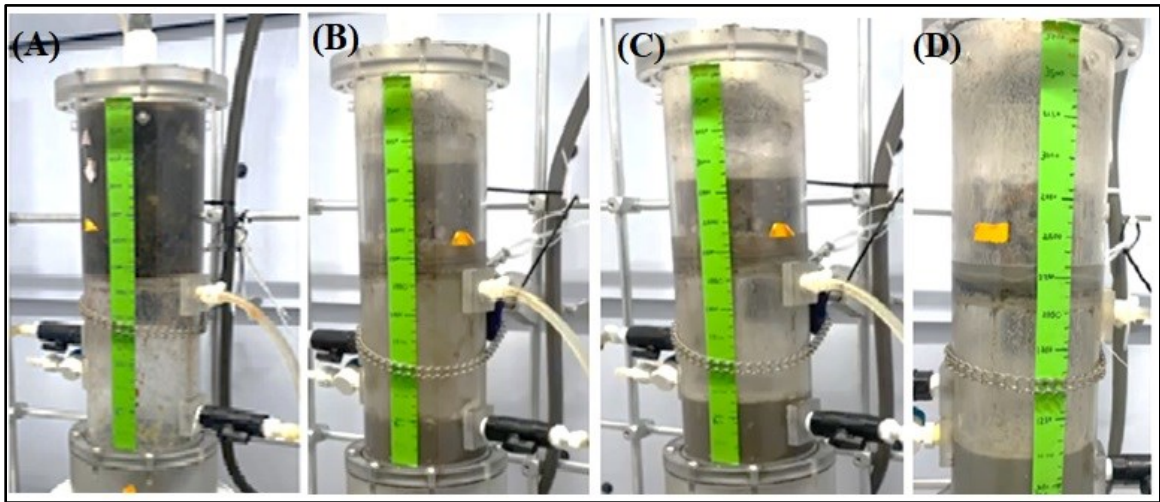


Figure A.1 Leachate percolation in LBR at different GAC loadings; (A) 0 g GAC/g VS<sub>foodwaste</sub>, (B) 0.25 g GAC/g VS<sub>foodwaste</sub>, (C) 0.38 g GAC/g VS<sub>foodwaste</sub>, and (D) 0.51 g GAC/g VS<sub>food waste</sub>

**Food waste residue with GAC at the end of fermentation at high GAC loading of 0.38-0.51 g GAC/g  $VS_{\text{foodwaste}}$ :**



Figure A.2 Food waste residue with GAC at the end of fermentation